

Technical Data for Mini 340 LED Canopy Light 150W



Back View

Special Feature:

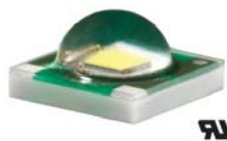
1. Quality Waterproof Driver (Taiwan Meanwell driver)



- A, High EMC, no interfere
- B, Power factor>0.95
- C, Power Efficiency>90%
- D, UL, TUV, PSE compliance
- E, Full protection: short circuit, over voltage, over current and over temprature

2. High-performance Original CREE LED (Made in USA) and perfect wiring design

Cree® XLamp® XP-E LEDs



It has High CRI and High lumens and high reliability. Even if one led failed, the remainin g LEDs will still work.

3, Safety

- A, CE, RoHS, PSE, FCC, C-TICK, ATEX, EN62471, IP66, ETL/cETL, SAA
- B, ATEX approved (Explosion proof)
- C, IP66 approved (Water proof)
- D, EN 62471 (Photobiological Safety)
- D, 4000V Hi-pot test pass



4, Warranty Policy

5 years warranty with free collection and free delivery. For any defects, we will solve it by either repairing any defective parts or replace a new LED canopy light. (For more details, please ask for Warranty Statement)

5, Low Light Loss

The light source is the low light loss and high-bright LED, in which the loss is less than 5% for every 10,000 hours. The aluminum back-side housing performs an excellent heat dissipation, which guarantees a lower junction temperature of the LED, thus slowing down light loss.

6, Environment-Friendly

While working, no ultraviolet light and infrared light radiation. And does not contain any hazardous substance, such as Lead and Mercury.

7, Anti-vibration

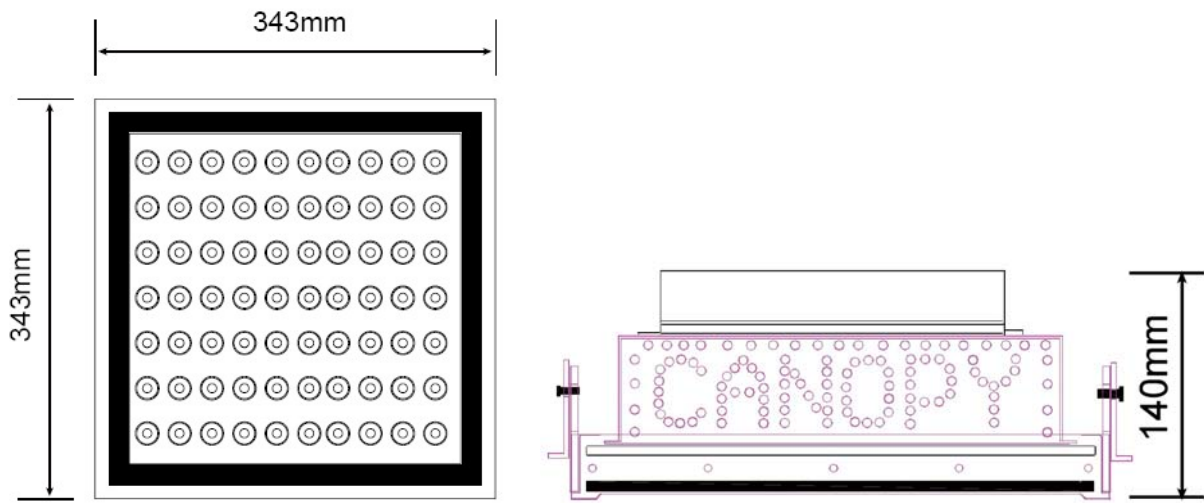
Solid-state device, Can withstand Moderate vibrations

Application:



1. Petrol Stations
2. Sport Stadiums
- 3, Carwash Area
- 4, Car Parking

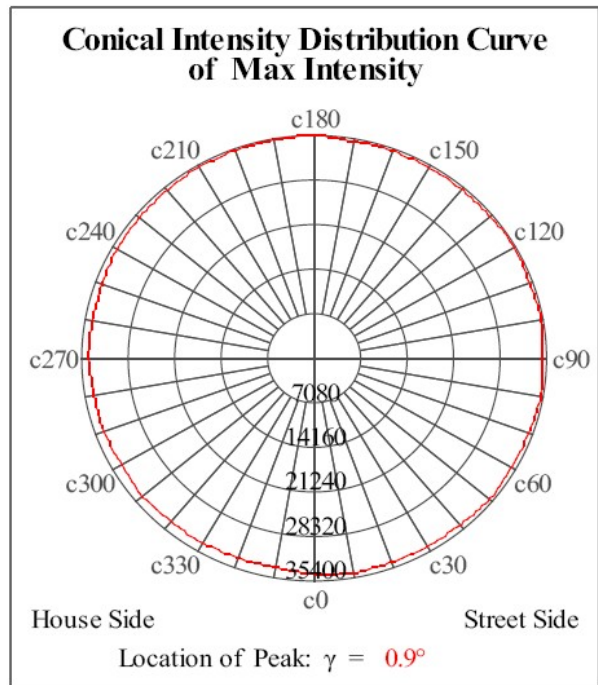
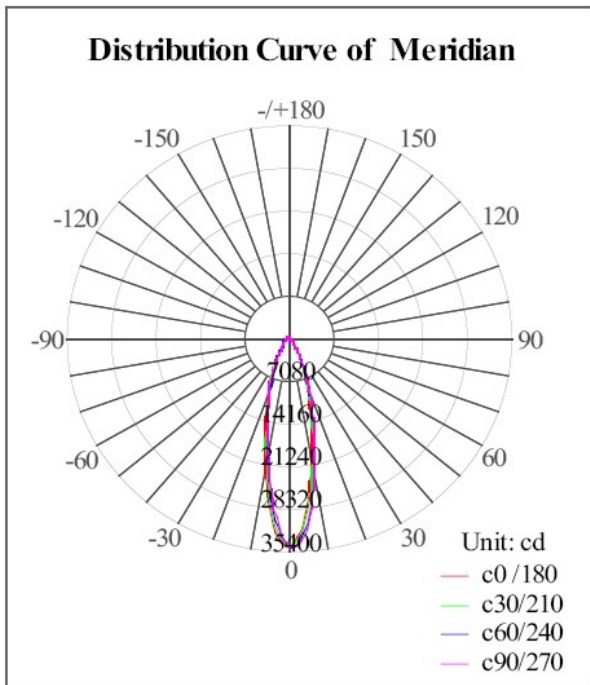
2D Drawings :



Technical Specification:

Item NO.	CA-CLW15-150W/ CA-CLNW15-150W	
Replacement	400w Sodium/metal lamp (Recommended)	
LED Source	CREE LED(XP-E/R3)	
IP Rating	IP 66(water proof, dust proof and damp proof)	
Lamp Power	150W±10%	
Input Voltage	90-295VAC(47-63Hz)	
Power Factor (PF)	> 0.95	
Power Efficiency	> 90%	
Luminous Flux	12000-14000Lm	
Light Efficiency	90Lm/w	
Average CRI	Ra > 80	
Luminous Uniformity	> 0.6	
Bean Angle	90 degree(Standard), 60/120 available	
Color Temperature	NW	4000-4500K
	CW	6000-6500 K
Working Lifetime	> 50000hrs	
Light Distribution Curve (Beam Pattern)	Asymmetric(Bat Wing)/Rectangular Beam	
Light Body and Lampshade Material	Aluminum Alloy and Tempered glass	
Storage Temperature	-30℃---+80℃	
Working Environment	-30℃---+50℃ :10%-95%RH	
Junction Temperature (Tj)	60℃ ± 10% (ta=25℃)	
Weight	10.5kg	
Product Size (mm)	343×343×140	
Package Size (mm)	420×390×230 (1PC)	

Light distribution Curve (IES File available, please contact us)



Illuminance Test:

H[m]	Diameter[m]	Illuminance[lx]
1.0		35295.87
2.0		8823.97
3.0		3921.76
4.0		2205.99
5.0		1411.83

Packing Details:

Part No.	Item Size	Packing Qty	Gross Weight	Carton Size(L*W*H)
CA-CLW15-150W	343×343×140	1Pcs	10.5kg	420×390×230

Caution & Warning:

1. Use outdoor or indoor.
2. Work under the fixed voltage.
3. Pls operate in the right way when you install the LED Canopy light in case to avoid the power harm and body harm. When installing, please note the short-circuit protection such as the socket with the fuse.
4. non-dimmable
5. If any doubt about the installation or use of this product, consult a competent electrician or technician.